

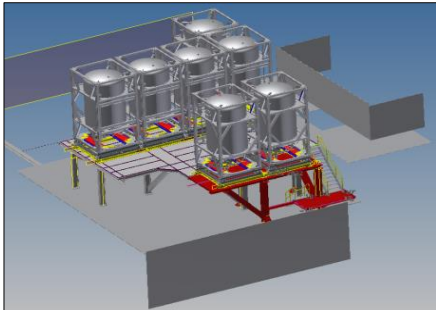


HYDRAULIC & AUTOMATION

A new Partnership providing Mechanical and Hydraulic Solutions for the Oil & Gas Industry



- Site surveys offshore and onshore,
- Engineering, including 2D and 3D modeling, and 3D laser scanning,
- Interface with Class in term of design and fabrication (ABS, DNV),
- Sourcing and Procurement Solution,
- Prefabrication from our 4 Workshops (France, South Africa, UAE & Malaysia),
- Installation on site – offshore and remote onshore locations and during transit,
- Electrical Engineering , Supply & Onsite Installation,
- Marine Risers Inspection and recertification.



- French Leader for Hydraulic and Mechatronics solutions.
- Hydraulic advice and diagnostics,
- Hydraulic Power Unit conception,
- Mechanical, Hydraulic and Electrical Engineering,
- Cylinder manufacturing,
- On site services : Maintenance, Piping / Tubing, Flushing, Oil Analysis, Pressure and Flow Recording.



For more details please contact : p.anselme@hyd-and-au.com / spezennec@3cmetalme.com



Together, we can provide :

Hydraulic Service :

- Trouble shooting, Diagnostic, Process Improvement, Engineering,
- On site Equipment : Oil Analysis kit, Pressure and Flow Recorder, Accumulator Charging Set, Flushing Units, Piping, Tubing and Hydraulic Unit onsite Installation.



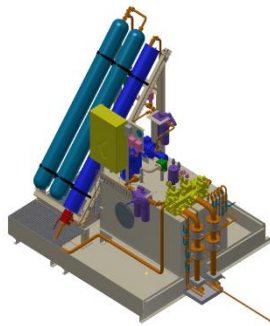
All trademark hydraulic spare parts :

- Pumps, valves, accumulators, filters, exchangers from our stock (8M Euros) and our large supplier network.



Engineering service :

- For Hydraulic Design : Power units, Filtration Skids, Structures, Tubing and Piping,
- Using High Tech Technologies and Softwares (FEA Calculation, Inventor).



All Piping & Tubing Installation :

- Carbon Steel and Stainless Steel Pipes & Tubing,
- Working pressure up to 15000 psi,
- Welded, crimped, Autoclave Technology, widen or Waltersheid Technologies,
- NDT, Quality control,
- On site Pressure Testing and Flushing.



For more details please contact : p.anselme@hyd-and-au.com / [speznec@3cmetalme.com](mailto:spezennec@3cmetalme.com)